



Whaikaha – Ministry of Disabled People: Community update



Published: April 2025

What you will find in here

Page number:



About this Easy Read2



Whaikaha is a standalone
Ministry.....3



What is some of the work
we are doing?16



Where to get more information31

About this Easy Read



This Easy Read document is a community update.



It is from Paula Tesoriero who is the Chief Executive at Whaikaha – Ministry of Disabled People.



In this Easy Read document **Whaikaha – Ministry of Disabled People** will be called **Whaikaha**.

Where it says **we / us** this means Whaikaha.



This community update is about some of the important things Whaikaha are doing this year.

Whaikaha is a standalone Ministry



Cabinet decided near the end of 2024 that Whaikaha would become a **standalone Ministry**.



Cabinet is a group of **ministers** that meet to make decisions.



A **minister** is an important person who is part of the Government.



A **standalone Ministry** is a part of the government that works on things to do with 1:

- group of people
- part of life in Aotearoa New Zealand.



Whaikaha is working with:

- the disability community
- government agencies
- local government like your city council
- businesses
- all of Aotearoa New Zealand.



We work on making Aotearoa New Zealand a **non-disabling** place to live.



Non-disabling means that all parts of life are made to be accessible / used by everyone including disabled people.

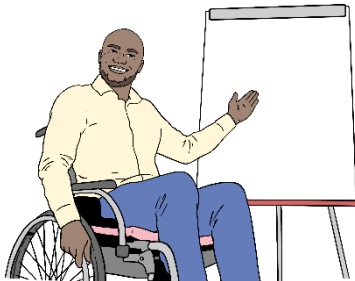
Whaikaha now has 3 work groups which are:



- 1. Strategy and Enablement**
- 2. Policy and Insights**
- 3. Outreach and Innovation.**



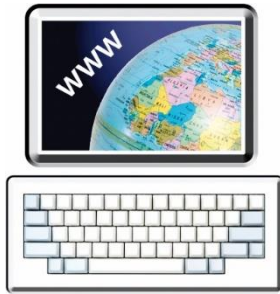
We will talk about these groups on the next few pages.



Each group is led by a Deputy Chief Executive / DCE.



The Kaihautū – Chief Advisor Māori Ronelle Baker also works with these groups.



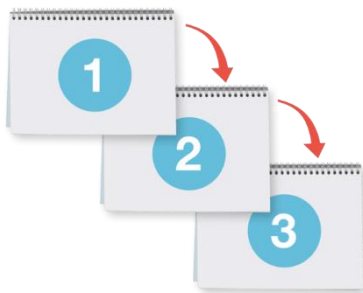
You can find more information about the people who lead Whaikaha at this **website:**

<https://bit.ly/433hnoL>



1. Strategy and Enablement

The Deputy Chief Executive / DCE of **Strategy** and **Enablement** is Ginny Baddely.



Here **strategy** is making plans:

- with many parts
- that go for a long time.



Here **enablement** means doing things at Whaikaha to give disabled people a good life through:

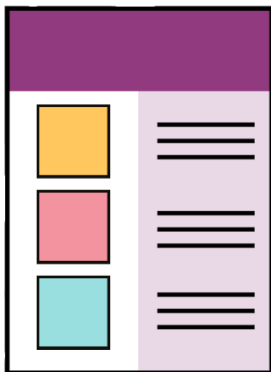
- communications / giving them information
- money for the things Whaikaha need to do
- supporting staff to do their jobs the best they can.

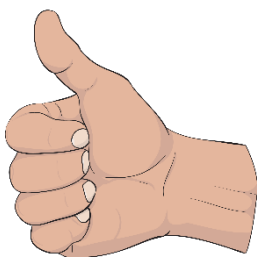
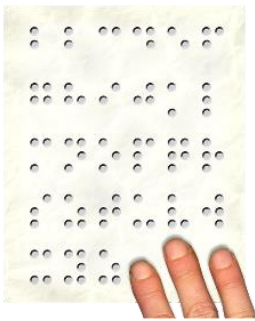




The groups that are part of Strategy and Enablement are:

- People and Culture
- Finance which is about things to do with money
- Whaikaha strategy
- **Alternate Formats.**





Alternate Formats are ways people can get information.

The alternate formats include:

- Easy Read
- New Zealand Sign Language
- Braille
- large print
- audio.

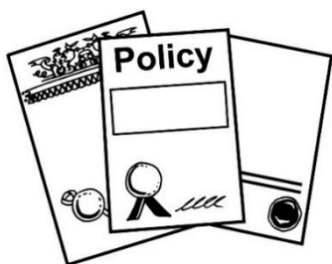
We look forward to:

- the Alternate Format group growing
- Alternate Formats being used more by everyone including the government.



2. Policy and Insights

The Deputy Chief Executive / DCE of **Policy** and **Insights** is Ben O'Meara.



Here **policy** means government rules.



Here **insights** means getting information about disabled people to:

- think carefully about it
- share it with other people.

The groups that are part of Policy and Insights are:



- Policy which means working with the government on rules
- **Data** and Insights
- Legal which is about the things Whaikaha must do by law.



Data is information that shows what groups of people:

- are doing
- need.

The Policy team will:

- give advice to the government
- get information from people in other countries about making policy.



The important things the Policy team want to do are:

- make changes for disabled people in our community
- make rules / laws using good information
- watch what other government agencies are doing about disability issues.





3. Outreach and Innovation

The Deputy Chief Executive / DCE of **Outreach** and **Innovation** is Rebecca Elvy.



Here **outreach** means:

- figuring out who to work with
- finding ways to work better with other people.



Here **innovation** means doing things in ways that are:

- new
- interesting
- includes everyone.





The groups that are part of Outreach and Innovation are:

- Partnerships and Stewardships
- Communications
- Ministerial and Executive Services.

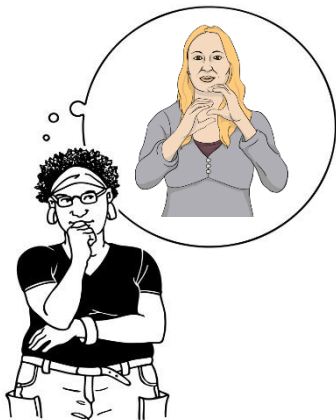
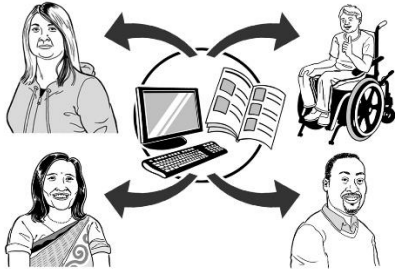


Partnerships and Stewardships is the group that works with other organisations in the disability community including the New Zealand Sign Language Board.



Ministerial and Executive Services is the group:

- that works with the Minister for Disability Issues
- where people get official information about disability issues.



Outreach and Innovation team is doing work on strategies / plans that will change how people:

- think about Deaf and disabled people
- behave towards Deaf and disabled people.





Outreach and Innovation is also doing work on:

- supporting Deaf and disabled organisations to become better
- accessibility.

What is some of the work we are doing?



Some of the things we are working on are:

- making changes to the New Zealand Disability Strategy
- the United Nations Convention on the Rights of People with Disabilities / UNCRPD **recommendations**
- the New Zealand Sign Language / NZSL strategy
- the recommendations from the Royal Commission of Inquiry into Abuse in Care
- the Disability 4-point Plan.

A **recommendation** is something that would be good to do.



1. New Zealand Disability Strategy

The New Zealand Disability Strategy will end in 2026.



You can read more about the New Zealand Disability Strategy at this **website**:

<https://bit.ly/3XmWUtx>



We are excited to start work on refreshing / changing the New Zealand Disability Strategy.

We think it is a very important thing to do.



We will be working with the disability community to do the refresh / change.



We are looking for promises to work on important **outcomes** from:

- government agencies
- industry leaders.



Outcomes are how things end up for people.



An outcome might be a disabled person living a good life after getting the support they need.



The first thing we have done is set up **Working Groups**.



Here a **Working Group** is people who:

- do research
- talk with people in the disability community
- talk about disability issues
- give information to:
 - Whaikaha
 - the Government.

Later this year the Working Groups will talk about the New Zealand Disability Strategy with the disability community.

We will give you more information about this when it is ready.



You can find out more information about the refresh / change of the New Zealand Disability Strategy at this **website**:

<https://bit.ly/3Qtq0Dv>

2. UNCRPD recommendations



The Committee of the **United Nations Convention on the Rights of People with Disabilities / UNCRPD** has given the government recommendations.



The **United Nations Convention on the Rights of Persons with Disabilities / UNCRPD** is an agreement lots of countries have signed up to.



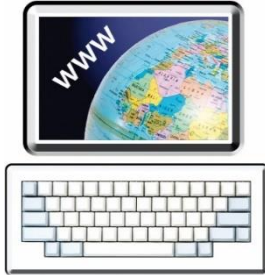
It says what governments must do to make sure disabled people get the same rights as everybody else.



The Minister for Disability Issues Louise Upston recently gave an update about what the Government is doing about these recommendations.



Whaikaha will be working on 17 of the recommendations as part of the refresh / change to the New Zealand Disability Strategy.



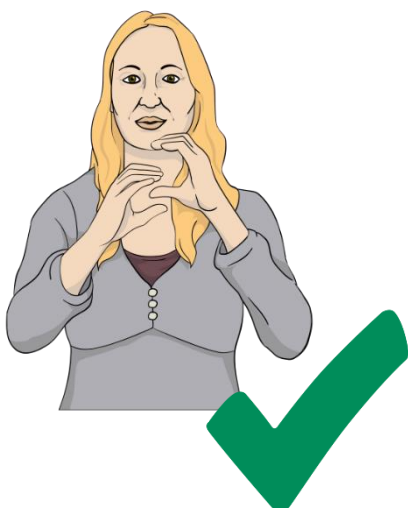
You can read the update from Minister Upston at this **website**:

<https://bit.ly/3XsgRPE>

3. New Zealand Sign Language / NZSL Strategy



Whaikaha is supporting the New Zealand Sign Language / NZSL Board to refresh / change their strategy.



The strategy wants to make sure New Zealand Sign Language / NZSL keeps being used as an **official language** in New Zealand.



An **official language** is a language the government has said is said to be used by people in a country.

The official languages of New Zealand are:

- English
- te reo Māori
- New Zealand Sign Language / NZSL

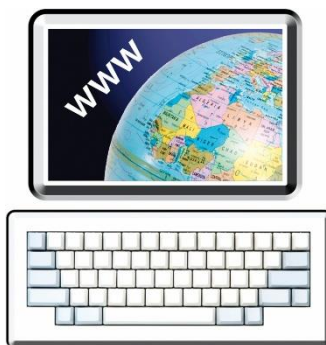
The public will be asked to give feedback about a **draft** strategy later this year by:

- The New Zealand Sign Language / NZSL Board
- Whaikaha.



Here **draft** means a document:

- is not finished
- might change.



You can find out more information about the New Zealand Sign Language Board / NZSL at this **website**:

www.nzsl.govt.nz

4. The Royal Commission of Inquiry into Abuse in Care



This part of the document talks about **abuse**.



Abuse can be things like:

- hurting you
- saying mean things to you
- taking your money away.



This information may upset some people when they are reading it.

This information is not meant to scare anyone.



If you are upset after reading this part of the Easy Read document you can talk to your:

- whānau / family
- friends.



free call or text
any time

You can also contact Need to Talk by:

- calling 1737
- texting 1737



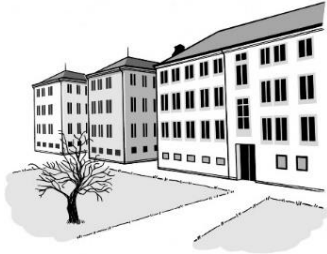
It does not cost any money to call / text 1737.



If you do not feel safe call the police on **111**



The Royal Commission of Inquiry into Abuse in Care looked into abuse that happened to people **in care**.



Being **in care** means that the Government or a **faith-based institution** was in charge of the care of someone.



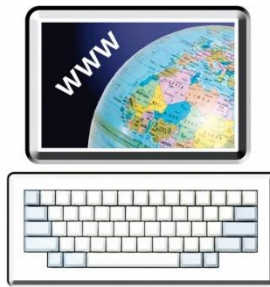
Faith-based institutions are run by religious groups like churches.



The Royal Commission of Inquiry into Abuse in Care made recommendations about disabled people in care to the Government.



Whaikaha will keep giving advice to the Government about the recommendations.



You can find out more about the
Royal Commission of Inquiry into
Abuse in Care at this **website**:

<https://bit.ly/4h7Dgsg>

5. The Disability 4-Point Plan



The Disability 4-Point Plan is a plan to give chances to work in the **Public Service** to:

- tāngata whaikaha Māori / Māori disabled people
- disabled people.



Working in the **Public Service** means doing a job at an organisation that supports the government.



Whaikaha will be the Ministry that leads this plan.



You can find out more about The Disability 4-Point Plan at this **website**:

<https://bit.ly/4kkBCXb>

Where to get more information



For information on how to contact
Whaikaha visit this **website**:

www.whaikaha.govt.nz/contact-us



You can get in touch with us:

- by **email** at:

contact@whaikaha.govt.nz

- by **phone** on:

0800 566 601





You can call us on the phone:

- from 8 am to 5 pm on:
 - Monday
 - Tuesday
 - Thursday
 - Friday



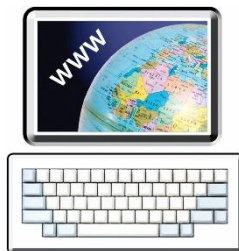
- from 9.30 am to 5 pm on:
 - Wednesday.





If you find it hard to use the phone
the **New Zealand Relay** service is for
people who are:

- Deaf / hard of hearing
- deafblind
- speech impaired / find it hard to talk.



You can find out more about the New
Zealand Relay service at:

www.nzrelay.co.nz



This information has been written by
Whaikaha – Ministry of Disabled People.



It has been translated into Easy Read by the
Make it Easy Kia Māmā Mai service of People
First New Zealand Ngā Tāngata Tuatahi.



The ideas in this document are not the ideas of
People First New Zealand Ngā Tāngata Tuatahi.



All images used in this Easy Read document are
subject to copyright rules and cannot be used
without permission.



Make it Easy uses images from:



- Photosymbols
- Change Images
- Huriana Kopeke-Te Aho
- SGC Image Works
- T Wood
- Studio Rebeko
- Inga Kramer.

