



Scan
for NZSL
name



New Zealand Disability Strategy

2026 to 2030:

Housing Roadmap

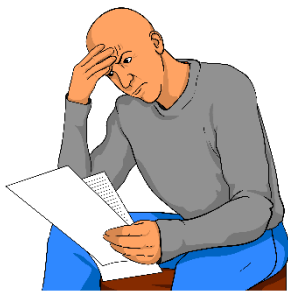


Published: June 2026

Before you start



This is a long document.



It can be hard for some people to read a document this long.

Some things you can do to make it easier are:



- read it a few pages at a time
- set aside some quiet time to look at it
- have someone read it with you to support you to understand it.

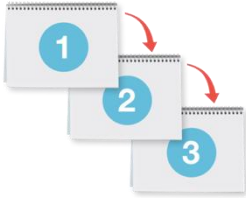


What you will find in here

Page number:



What this Easy Read is about.....3



About the Roadmap7



Housing actions11



More information30

What this Easy Read is about



This Easy Read is about the **New Zealand Disability Strategy 2026 to 2030**.



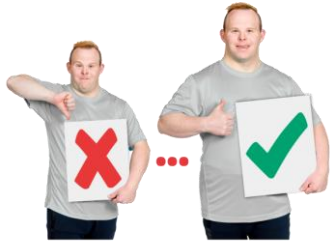
The **New Zealand Disability Strategy** says what the Government will do to make things better for disabled people in Aotearoa New Zealand.



In this Easy Read the New Zealand Disability Strategy 2026 to 2030 will be called the **strategy**.



The **Ministry of Disabled People – Whaikaha** was in charge of writing the strategy.



The **Ministry of Disabled**

People – Whaikaha works to make things better for disabled people by working with:

- the Government
- the community which includes:
 - disabled people
 - tāngata whaikaha
Māori / Māori disabled people
- businesses.

In this Easy Read when we say **Whaikaha** this means the Ministry of Disabled People – Whaikaha.

Where it says **we** this means Whaikaha.



The strategy has 5 **priority outcome areas**.



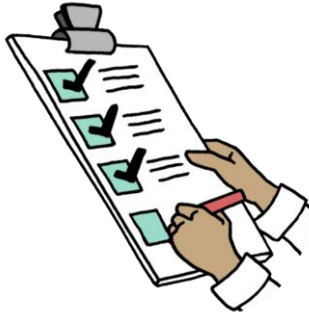
Priority outcome areas are the most important things the strategy will work on.



The priority outcome areas are:

- education / learning
- employment / jobs
- health
- housing
- justice which means things to do with the law.





Each priority outcome area has:

- a **goal**
- **actions**.



Here a **goal** is how we want things to be.



Here **actions** are things we will do to work towards meeting a goal.



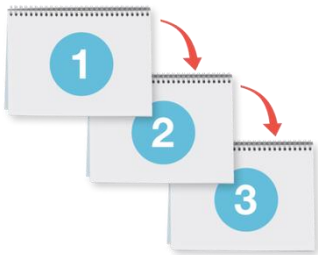
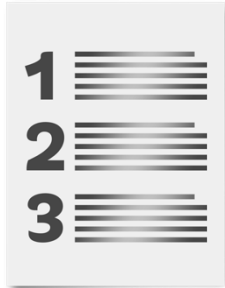
This Easy Read is the **Roadmap** for the housing priority outcome area.



Here the **roadmap** says when the work for each action will be done.

It shows what will happen in the next 5 years.

About the Roadmap

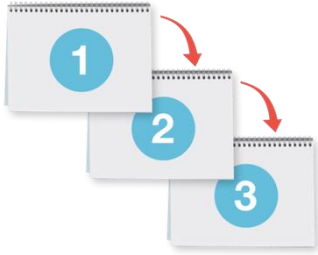


For each action the Roadmap says:

- what the action is
- the **agencies** that will:
 - lead the action
 - support / work on the action
- what **stage** the action will be at in each year.

Here **agencies** means organisations like:

- Government ministries / departments
- service providers
- non-government organisations.

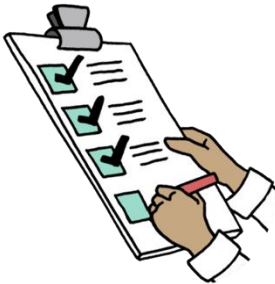


Here **stages** are the steps work on the action has to go through to get done.



The work for each action has 3 stages:

1. **scoping**
2. **developing**
3. **implementing.**



Here **scoping** means finding out:

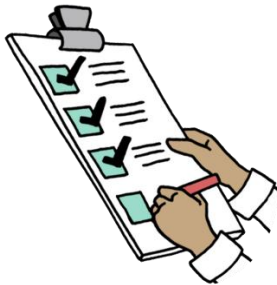
- what work needs to be done for the action
- what information we need before we can do the work.



Here **developing** means making a detailed plan for how we will do the work.



Here **implementing** means doing the work for the action.



Across all the priority outcome areas 13 actions will be implemented in 2026 which could mean:

- the work is started
- or
- all the work is done.



6 actions will be developed in 2026.



12 actions will be scoped in 2026.



The work on 3 more actions will start in later years.

In this Easy Read the **actions** are in boxes like this.

Housing actions

Housing Action 1



Write clear definitions / meanings of what **accessible homes** are.

Make sure everyone knows about the definitions / meanings.



Accessible homes are homes that are built in a way that makes it easier for disabled people to live in them.



Accessible homes have things like:

- ramps
- bathrooms that are easier for wheelchair users.

This action will be led by Whaikaha.

This action will be supported by:



- the **Ministry of Business, Innovation and Employment**



- the **Ministry of Housing and Urban Development**



- **Kāinga Ora.**



The **Ministry of Business, Innovation and Employment** is a part of Government in charge of many things including:



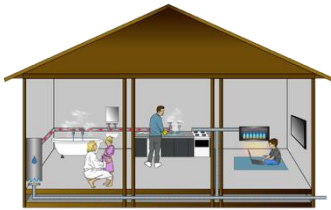
- buildings
- construction



It is also called **MBIE**.



Te Tūāpapa Kura Kāinga
Ministry of Housing and Urban Development



Kāinga Ora
Homes and Communities

The **Ministry of Housing and Urban Development** is the part of Government in charge of things to do with housing like making sure:

- there are enough houses for people to live in
- houses are:
 - warm
 - dry
 - safe.

Kāinga Ora is the part of Government that runs **social housing**.



Social housing is housing for people who do not have a lot of money.

Social housing can be run by:

- Kāinga Ora / the Government
- city / town councils
- other organisations.



In **2026** this action will be:

- scoped
- developed.

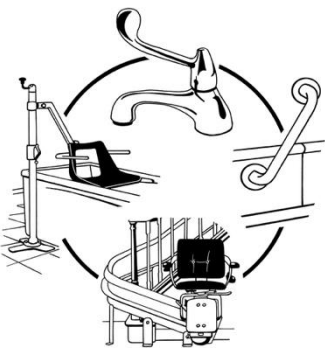


This action will be implemented in **2027**.



The work on this action for **2028** to **2030** has not been decided yet.

Housing Action 2



Make **data matching** better so:

- disabled people can be given social housing that works for them
- the Government can find out what kinds of social housing to build in the future.

Here **data matching** means:

- looking at:
 - what needs a disabled person has
 - how accessible different homes are
- using this information to say which house would be best for each person.

This action will be led by the **Ministry of Social Development**.



The **Ministry of Social Development** is the part of Government in charge of:

- paying benefits / money for people who do not have enough money to live on
- supporting people to find jobs.

The Ministry of Social Development is also called **MSD**.

This action will be supported by:

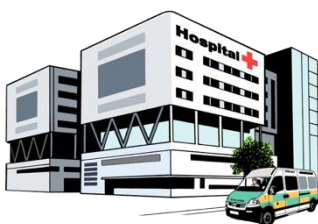


- Whaikaha
- the Ministry of Housing and Urban Development
- Kāinga Ora
- the **Ministry of Health**.

The **Ministry of Health** is the part of Government in charge of the **health system**.



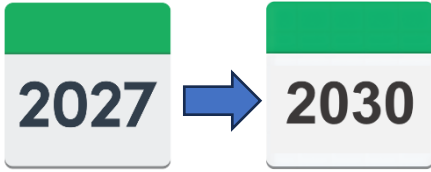
The **health system** is all the people / organisations that work together to make healthcare happen like:



- doctors
- hospitals.



This action will be scoped in **2026**.



The work on this action for **2027** to **2030** has not been decided yet.

Housing Action 3



Look at what stops **private** companies from building more homes that are:

- accessible
- and
- **affordable.**



Here **private** means something that is not part of the Government.



Affordable homes are homes that do not cost too much money for many people to buy.



This action will be led by the Ministry of Housing and Urban Development.



This action will be supported by:

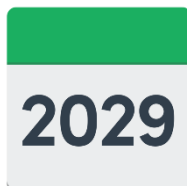
- the Ministry of Business, Innovation and Employment
- Whaikaha.



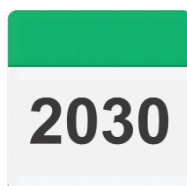
This action will be scoped in **2026**.



This action will be developed in **2027 to 2028**.



We will write a report about this action in **2029**.

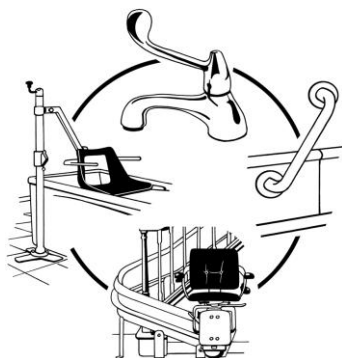


The work for this action in **2030** has not been decided yet.

Housing Action 4



Look at how to make the **housing modification system** better.



The **housing modification system** is the way the Government pays for making changes to a home so it is accessible.



This action will be led by the Ministry of Social Development.



This action will be supported by Whaikaha.



This action may also be supported by:



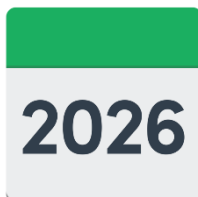
- Kāinga Ora
- **Oranga Tamariki**
- **ACC** / the Accident Compensation Corporation.



Oranga Tamariki is the part of the Government in charge of keeping children safe from harm.

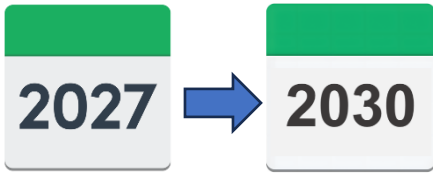


ACC supports people when they have been hurt in an accident.



In **2026** this action will be:

- developed
- implemented.



The work on this action for **2027** to **2030** has not been decided yet.

Housing Action 5



Collect **data** about what:

- housing needs disabled people have
- types of homes are being built in each part of the country.



Data is information that shows what groups of people:

- are doing
- need.

This action will be led by Whaikaha.

This action will be supported by:



- the Ministry of Housing and Urban Development



- the Ministry of Business, Innovation and Employment



- the Ministry of Social Development.



This action will be scoped in **2026**.



The work on this action for **2027** to **2030** has not been decided yet.

Housing Action 6



Write **voluntary guidelines** to tell people how to build accessible homes.



Guidelines are ideas about how to do something.



Voluntary guidelines mean people only have to use the ideas if they want to.



This action will be led by the Ministry of Business, Innovation and Employment.



This action will be supported by:

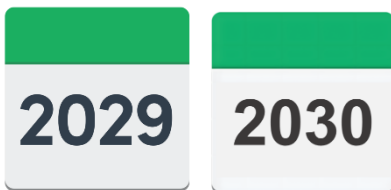
- Whaikaha
- the Ministry of Housing and Urban Development
- Kāinga Ora.



No work will be done on this action in **2026** to **2027**.

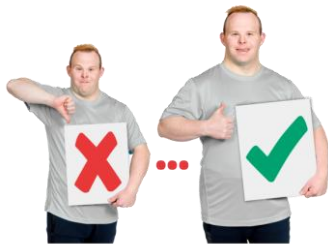


This action will be scoped in **2028**.



The work for this action in **2029** to **2030** has not been decided yet.

Housing Action 7



Look at the ways social housing is run to find out what:

- needs disabled people have
- changes would make it work better for disabled people.

This action will be led by:



- the Ministry of Social Development



- the Ministry of Housing and Urban Development.



This action will be supported by Whaikaha.



This action will be scoped in **2026**.



The work for this action in **2027** to **2030** has not been decided yet.

More information



You can find more information about the housing priority outcome area in the Easy Read:

**New Zealand Disability Strategy
2026 to 2030 Housing Change
Story at:**



<https://shorturl.at/fiijr>



You can find Easy Read Roadmaps for other priority outcome areas at:

<https://tinyurl.com/3xn2rsdm>



This information has been written by the Ministry of Disabled People – Whaikaha.



It has been translated into Easy Read by the Make it Easy Kia Māmā Mai service of People First New Zealand Ngā Tāngata Tuatahi.



The ideas in this document are not the ideas of People First New Zealand Ngā Tāngata Tuatahi.



All images used in this Easy Read document are subject to copyright rules and cannot be used without permission.



Make it Easy uses images from:

Professional Licence 410887559



- Photosymbols
- Change Images
- Huriana Kopeke-Te Aho
- SGC Image Works
- T Wood
- Studio Rebeko
- Inga Kramer.