



# New Zealand Disability Strategy

## 2026 to 2030:

### Health Roadmap



**Published: June 2026**

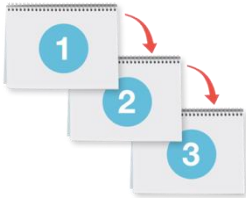


# What you will find in here

**Page number:**



What this Easy Read is about.....3



About the roadmap .....7



Health actions .....11



More information .....25

# What this Easy Read is about



This Easy Read is about the **New Zealand Disability Strategy 2026 to 2030**.



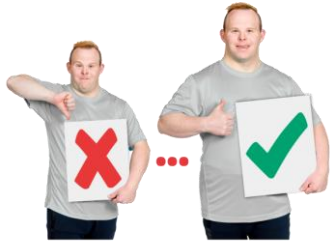
The **New Zealand Disability Strategy** says what the Government will do to make things better for disabled people in Aotearoa New Zealand.



In this Easy Read the New Zealand Disability Strategy 2026 to 2030 will be called the **strategy**.



The **Ministry of Disabled People – Whaikaha** was in charge of writing the strategy.



## The **Ministry of Disabled**

**People – Whaikaha** works to make things better for disabled people by working with:

- the Government
- the community which includes:
  - disabled people
  - tāngata whaikaha  
Māori / Māori disabled people
- businesses.

In this Easy Read when we say **Whaikaha** this means the Ministry of Disabled People – Whaikaha.

Where it says **we** this means Whaikaha.



The strategy has 5 **priority outcome areas**.



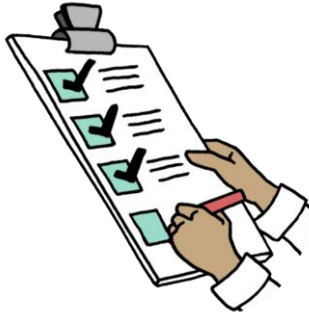
**Priority outcome areas** are the most important things the strategy will work on.



The priority outcome areas are:

- education / learning
- employment / jobs
- health
- housing
- justice which means things to do with the law.





Each priority outcome area has:

- a **goal**
- **actions.**



Here a **goal** is how we want things to be.



Here **actions** are things we will do to work towards meeting a goal.



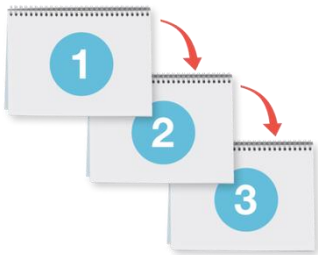
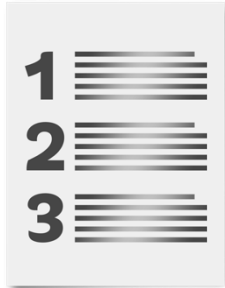
This Easy Read is the **roadmap** for the health priority outcome area.



Here the **roadmap** says when the work for each action will be done.

It shows what will happen in the next 5 years.

# About the roadmap

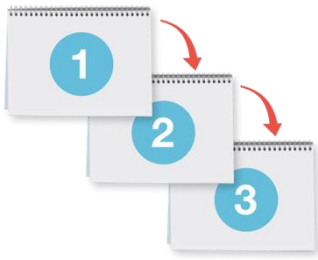


For each action the roadmap says:

- what the action is
- the **agencies** that will:
  - lead the action
  - support / work on the action
- what **stage** the action will be at in each year.

Here **agencies** means organisations like:

- Government ministries / departments
- service providers
- non-government organisations.

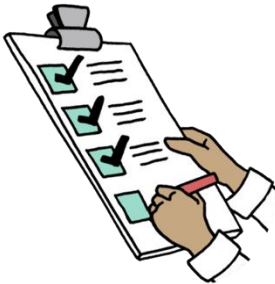


Here **stages** are the steps work on the action has to go through to get done.



The work for each action has 3 stages:

1. **scoping**
2. **developing**
3. **implementing.**



Here **scoping** means finding out:

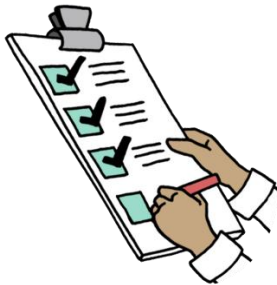
- what work needs to be done for the action
- what information we need before we can do the work.



Here **developing** means making a detailed plan for how we will do the work.



Here **implementing** means doing the work for the action.



Across all the priority outcome areas 13 actions will be implemented in 2026 which could mean:

- the work is started

**or**

- all the work is done.



6 actions will be developed in 2026.



12 actions will be scoped in 2026.



The work on 3 more actions will start in later years.

In this Easy Read the **actions** are in boxes like this.

# Health actions

## Health Action 1



Look at how the **health system** works.



Change the way the health system works to make it more:

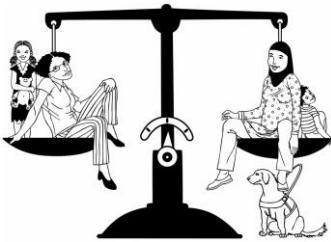
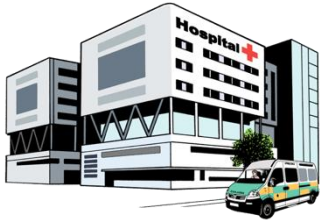
- **equitable**
- **accessible**
- **inclusive.**





The **health system** is all the people / organisations that work together to make healthcare happen like:

- doctors
- hospitals
- pharmacies / chemists.



Here **equitable** means the health system treats everyone fairly.



Here **accessible** means disabled people have what they need to easily:

- use things
- do things.



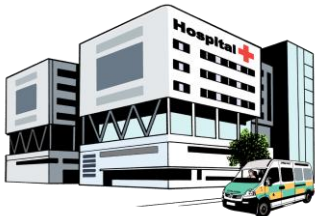
Here **inclusive** means that everyone can get healthcare that meets their needs.



This action will be led by **Health New Zealand**.



**Health New Zealand** is the part of the Government that runs the health system.



For example Health New Zealand runs hospitals.

This action will be supported by:



- the **Ministry of Health**



- Whaikaha.



The **Ministry of Health** is the part of the Government in charge of:

- deciding what the health system should do
- making sure the health system is safe.



Work on this action that is part of the **New Zealand Health Plan** will be developed in **2026**.

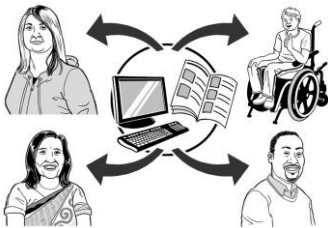


The **New Zealand Health Plan** is a plan from Health New Zealand about what it will do to support everyone to have better health.



The work on this action for **2027** to **2030** has not been decided yet.

## Health Action 2



Train health workers so:

- they can provide healthcare that is inclusive
- they understand that **culture** affects how people feel about healthcare
- it is easy for people to know where to go to get support with their health.



**Culture** is a way of:

- thinking that a group shares
- doing things as a group.

There are many different cultures in Aotearoa New Zealand.

Some examples of the different cultures are:

- Māori culture
- Pacific culture
- Deaf culture.

**Health New Zealand**  
Te Whatu Ora

This action will be led by Health New Zealand.

 **Whaikaha**  
Ministry of Disabled People

This action will be supported by Whaikaha.

 **MINISTRY OF HEALTH**  
MANATŪ HAUORA

This action may also be supported by:

- the Ministry of Health
- the **Education, Health and Community Industry Skills Board.**





The **Education, Health and Community Industry Skills Board** works with **employers** to:

- say what people need to learn to do a job
- make better training programmes.



**Employers** hire people to do jobs.



Work on this action that is part of the New Zealand Health Plan will be implemented in **2026**.



The rest of the work for this action will be scoped in **2026**.



The work on this action for **2027** to **2030** has not been decided yet.

## Health Action 3



Support disabled people to learn the skills they need to do jobs in the health system well.



**Health New Zealand**  
Te Whatu Ora

This action might be led by:

- the Ministry of Health
- Health New Zealand.



We will decide which agency will lead this action when the scoping stage is finished.



This action will be supported by Whaikaha.



This action may also be supported by the Education, Health and Community Industry Skills Board.



This action will be scoped in **2026**.



The work on this action for **2027** to **2030** has not been decided yet.

## Health Action 4

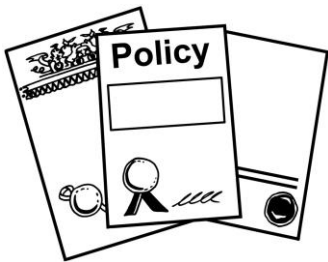


Use **national health data** to find out how the health system is working for disabled people.



**National health data** means numbers about the health system like the number of people who:

- go to the hospital each year
- have surgery each year.



The Ministry of Health will be in charge of writing **policy** for this action.



Here **policy** means the rules about how national health data can be used.

**Health New Zealand**  
Te Whatu Ora

Health New Zealand will lead the implementation stage of this action.

 **Whaikaha**  
Ministry of Disabled People

This action may be supported by Whaikaha.



This action will be developed in **2026**.



The work on this action for **2027** to **2030** has not been decided yet.

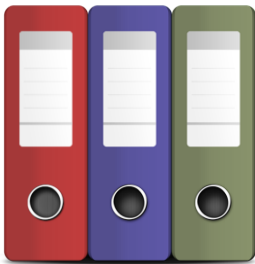
## Health Action 5



Let people use their **National Health Index number** to tell the health system what their accessibility needs are.



Your **National Health Index number** is a number the health system uses to keep together all the information about your healthcare.



Your National Health Index number is also called your **NHI**.

**Health New Zealand**  
Te Whatu Ora

This action will be led by Health New Zealand.



This action will be supported by:

- the Ministry of Health
- Whaikaha.



This action may also be supported by **Stats NZ**.



**Stats NZ** is the part of the Government that collects information about life in Aotearoa New Zealand.



In **2026** this action will be:

- scoped
- developed.



The work on this action for **2027** to **2030** has not been decided yet.

## More information

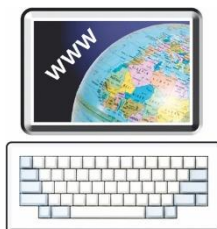


You can find more information about the health priority outcome area in the Easy Read:

**New Zealand Disability Strategy  
2026 to 2030 Health Change Story**  
at:



**<https://shorturl.at/8YIE6>**



You can find Easy Read roadmaps for other priority outcome areas at:

**<https://tinyurl.com/3xn2rsdm>**



This information has been written by the Ministry of Disabled People – Whaikaha.



It has been translated into Easy Read by the Make it Easy Kia Māmā Mai service of People First New Zealand Ngā Tāngata Tuatahi.



The ideas in this document are not the ideas of People First New Zealand Ngā Tāngata Tuatahi.



All images used in this Easy Read document are subject to copyright rules and cannot be used without permission.



Make it Easy uses images from:

Professional Licence 410887559



- Photosymbols
- Change Images
- Huriana Kopeke-Te Aho
- SGC Image Works
- T Wood
- Studio Rebeke
- Inga Kramer.